



# SWTest Conference

## Memory ProbeCard Test System



Kenny Song, River Huang  
Probing Semiconductor Co.,Ltd

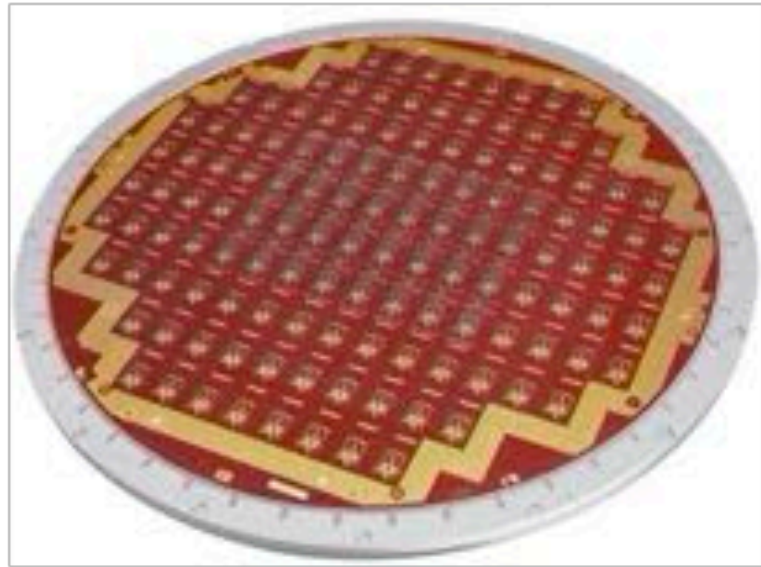
# PCT5801

## ProbeCard TestSystem For Memory

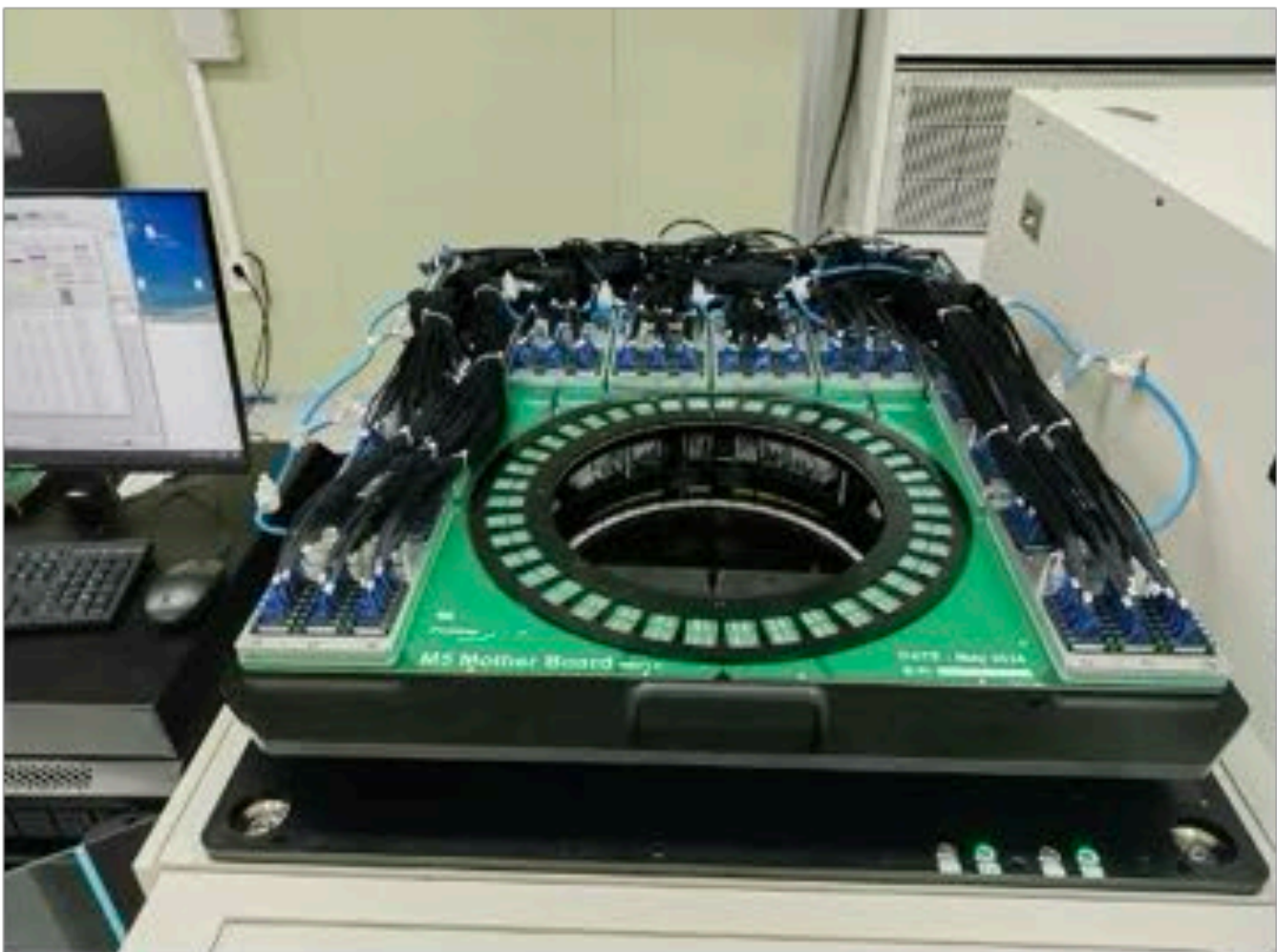
### 大规模存储器探针卡检测机



Probe Card Tester			100																															
-------------------	--	--	---	--	--	--	--	--	--	--	--	--	--	--	--	--	--	--	--	--	--	--	--	--	--	--	--	--	--	--	--	--	--	--



# 1000KG CHUCK FORCE NEEDLE TIP CAPTURE



Magnum5 MEMS



T5833 32TOM MEMS



T5830 8TOM Cantilever

# T5830 T5503

# T5833 M5/ND4/93K





# SWTest Conference

## Memory ProbeCard Test System

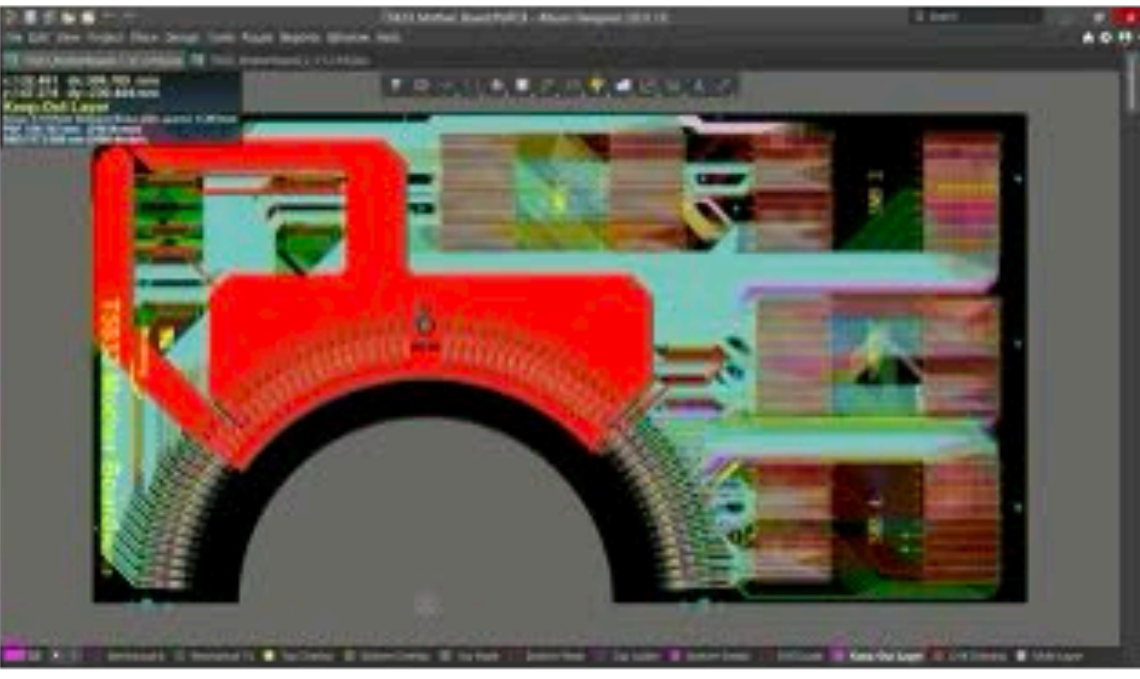
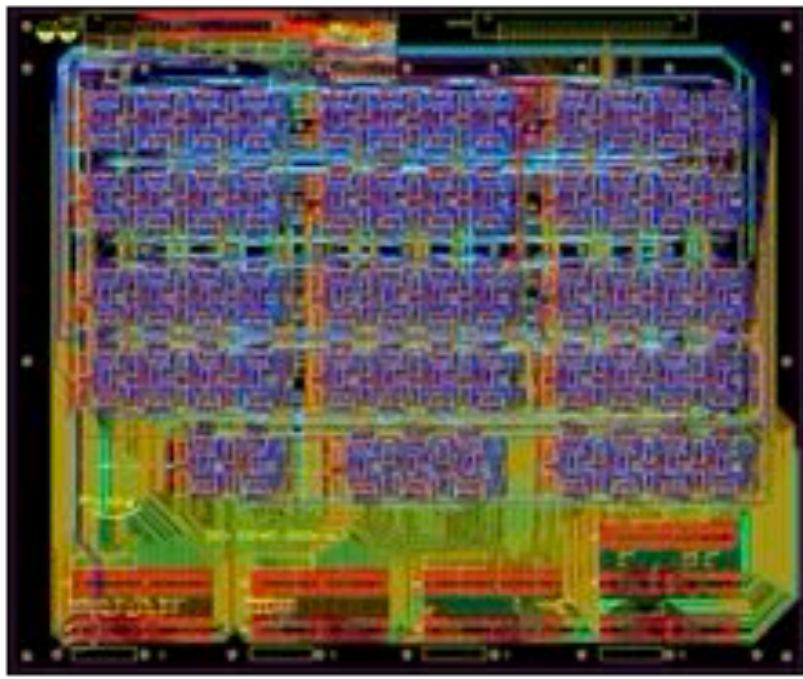
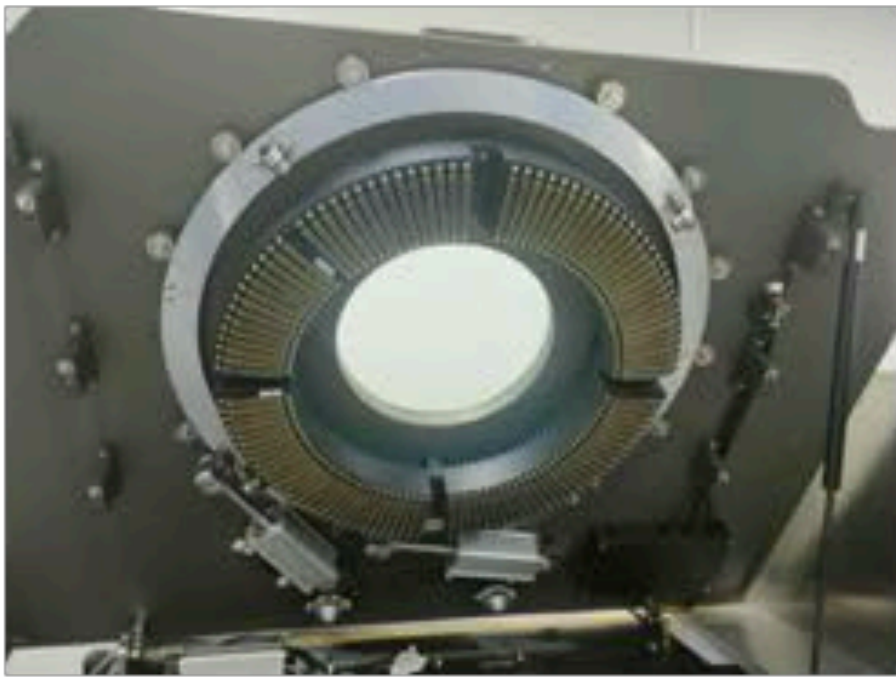
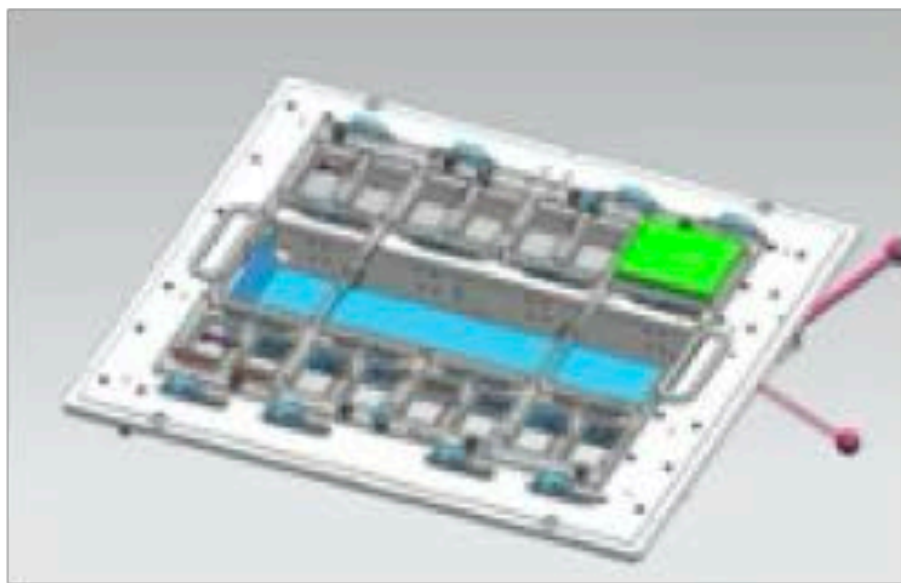
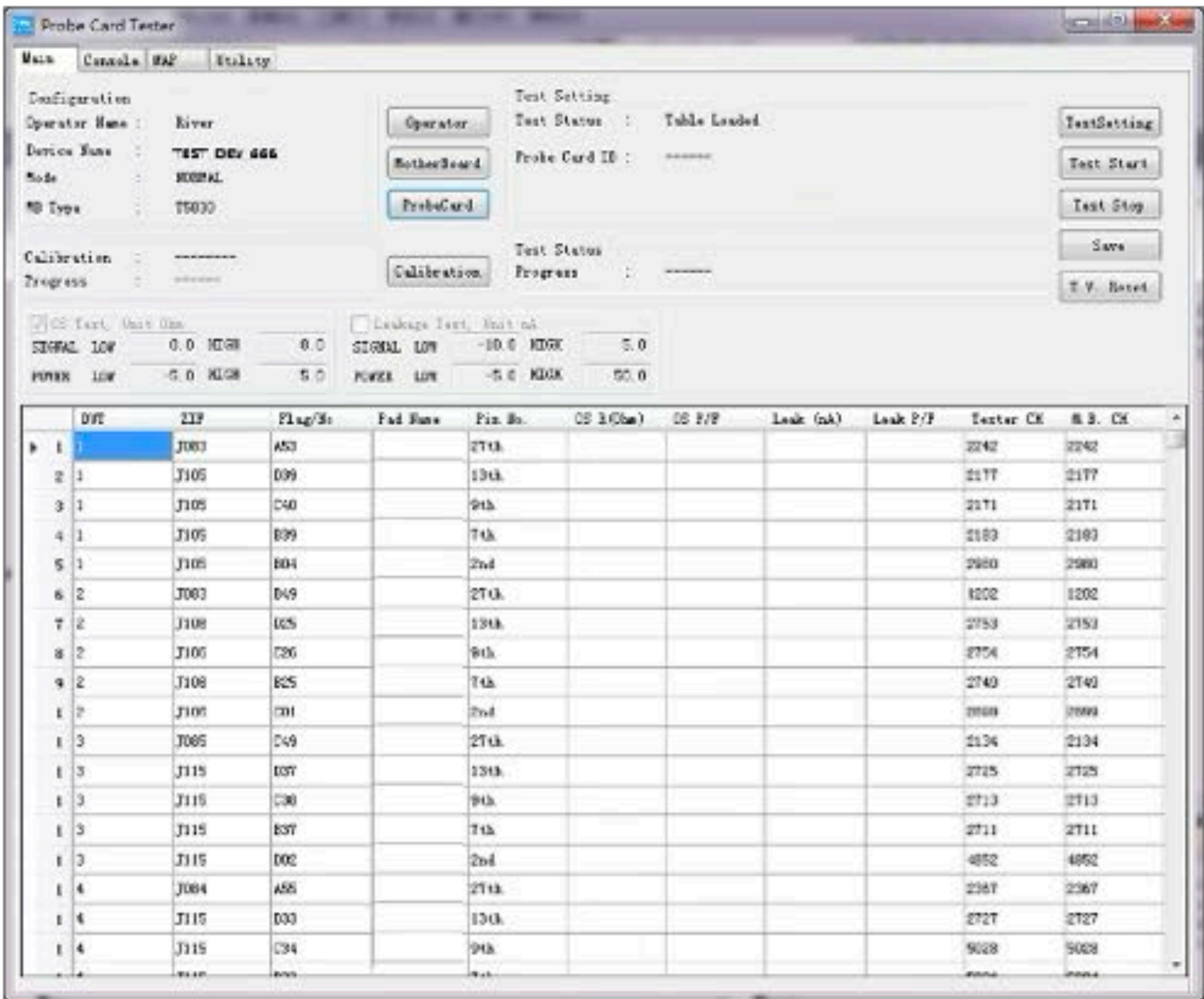


Kenny Song, River Huang  
Probing Semiconductor Co.,Ltd

### PCT5801 Specifications

DC Parametrics		Supported Platforms	
Max Ch	300000 Channels	Advantest	T5375 / T5377 / T5377S
PMU	1088		T5830 8/16/26/32 TOM
Digital	65536 Channels		T5833
Driver	200MHz, 1.25v~7V, ±32mA, 128M	Teradyne	ND4 / 93KDD
Leakage Test	10nA		M2
HV	256 Channels, 13.5V		M5
Cooling	Fan		
Interactive UI	JAVA, GUI, Windows, Customize		

Test Items	
OS	1 min @ 5000 channels
Leakage	15 min @ 5000 channels Pin-to-Pin
Relay Link	1 min
TDR (AC)	35 min , PBDATA matching
Others	64 LBIO Chain (MCW) Control
	FPGA/ASIC Control
Chuck Force	Max 1000kg, tri-temp
Needle Test	2um, TipLength,Alignment,Planarity
NeedTip Inspection	10min@10000pins, 60min@300000pins
Protocal	I2C, SPI, JTAG,GPIB and Any other



雯澜新（上海）半导体科技有限公司

Probing Semiconductor Shanghai Limited

上海市浦东新区张江高科技园区盛夏路560号905室

Room 905, No.560 Shengxia Road, Zhangjiang, Shanghai, China

TEL: 021-58957809 / 13795427077

Mail: [kenny@probing.com.cn](mailto:kenny@probing.com.cn) Web: [probing.com.cn](http://probing.com.cn)







# SWTest Conference

## Memory ProbeCard Test System



Kenny Song, River Huang  
Probing Semiconductor Co.,Ltd

# PSTA20K

## 超大规模针座测试机

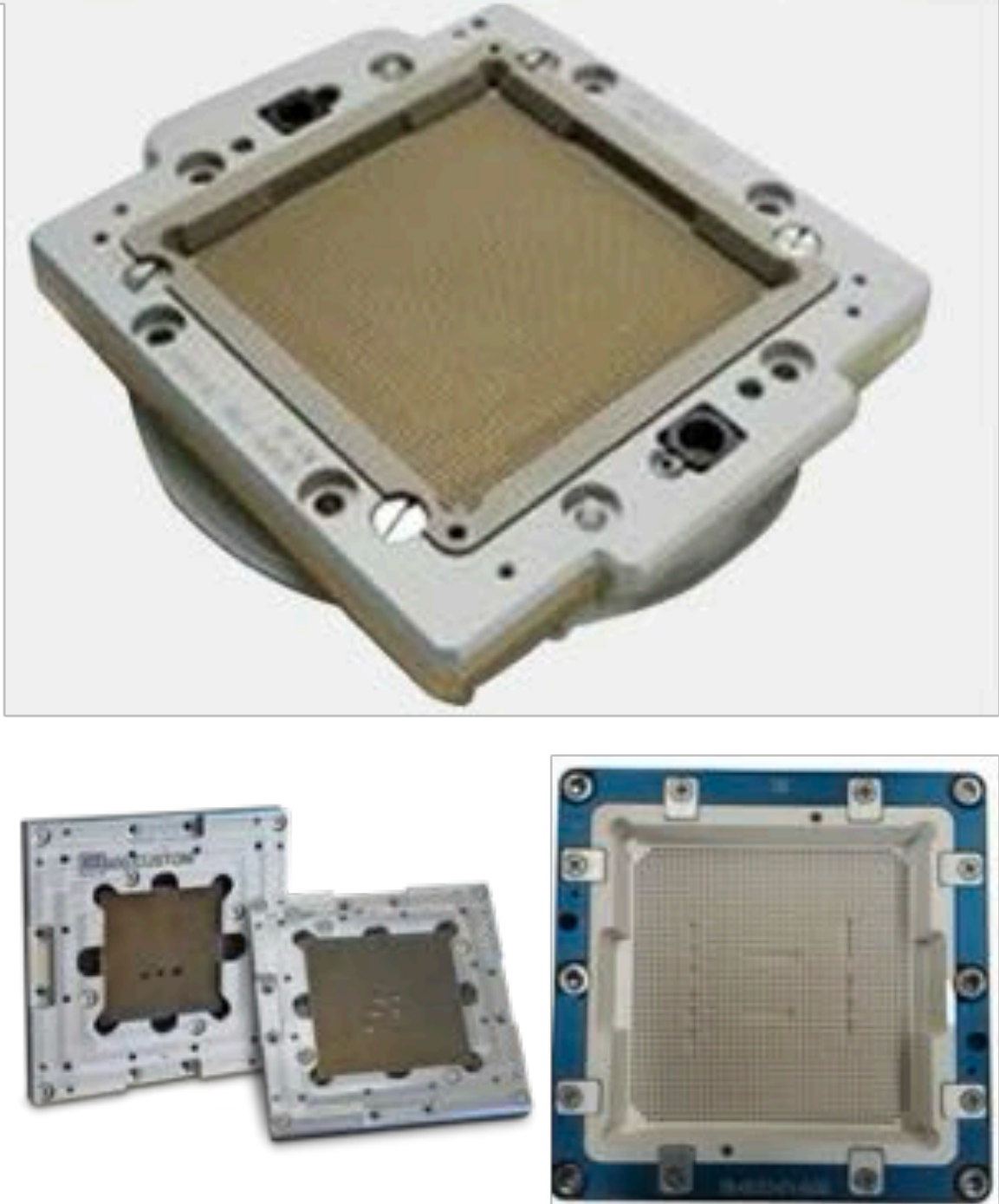
## Ultra-high Pin-Count Socket Tester



200 Pin Test



8000 Pin Test



# 5,000 ~ 60,000 PIN AI SOCKET TESTING