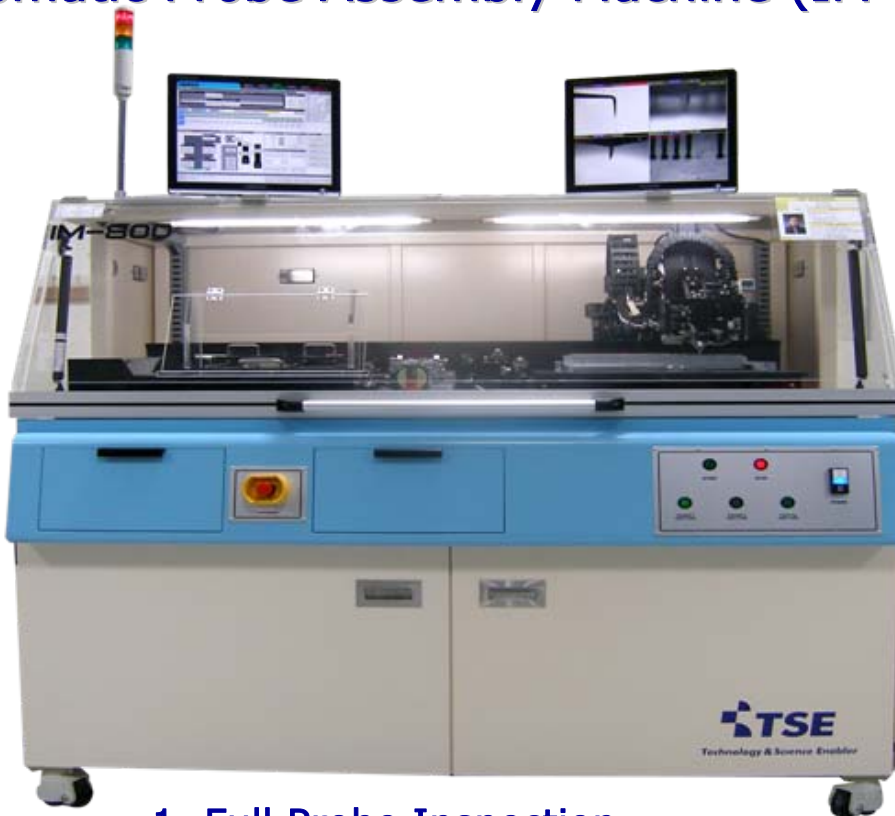




# Automatic Probe Assembly Machine

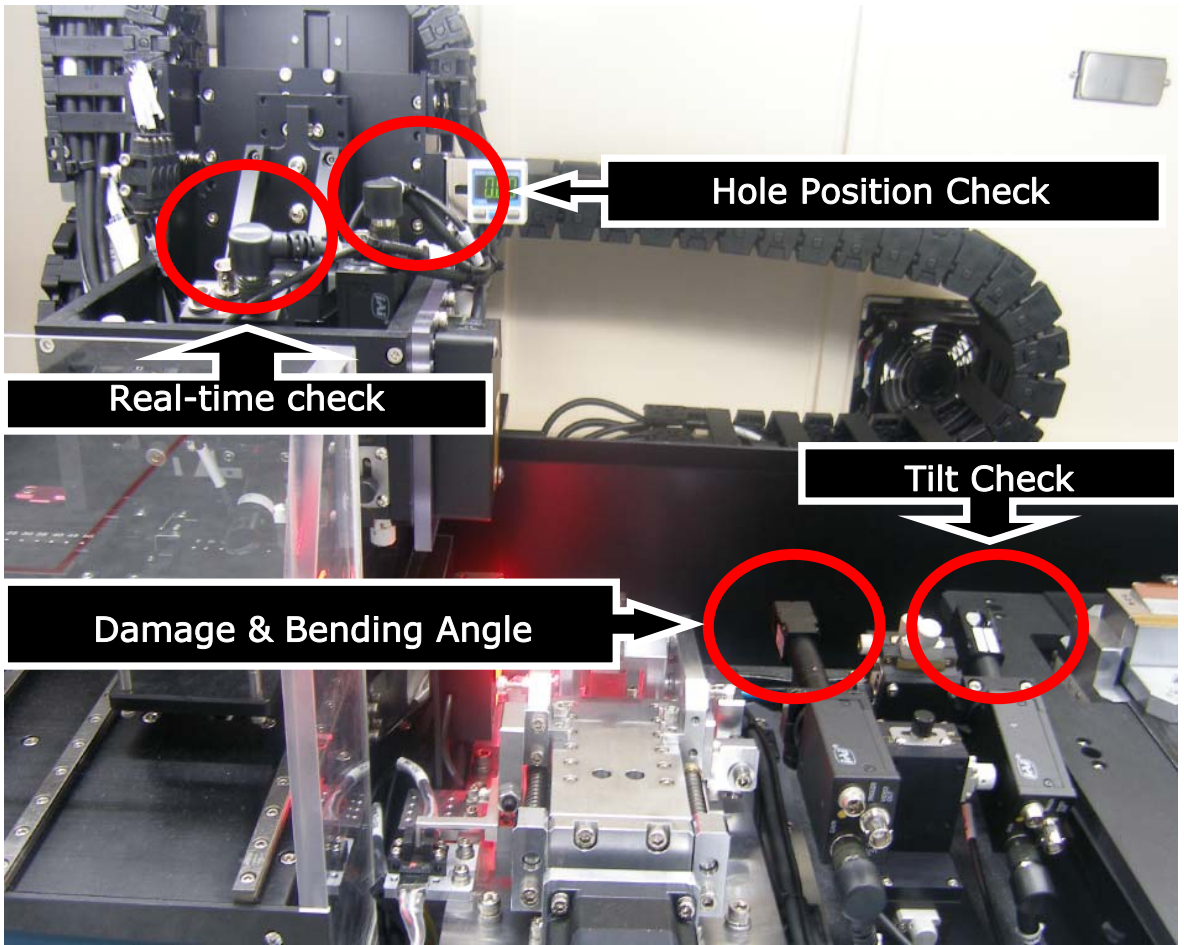
Dave Oh, Kyung-hwan Kim, Jung-pyo Chun

## Automatic Probe Assembly Machine (IM-800)



1. Full Probe Inspection
2. Productivity Improvement
3. Quality Consistency
4. High Resolution Image Processing
5. Highly Accurate & Repeatable Positioning

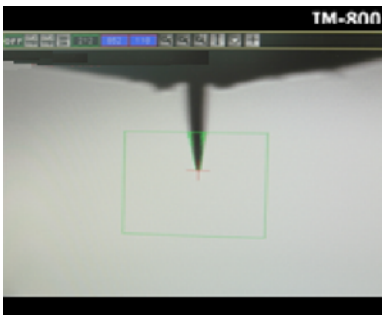
# Full Inspection



Probe Damage



Bending Angle

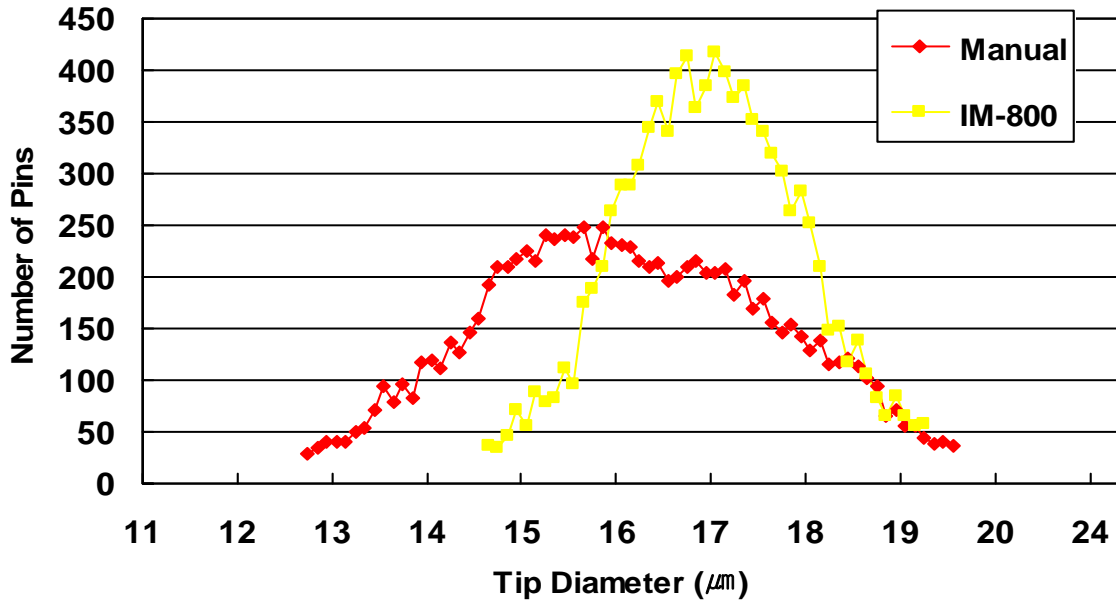


Probe Tilt



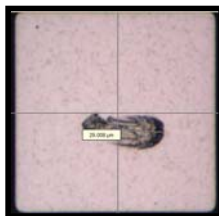
Hole Check

## Reducing Tip Dia. Dispersion by Probe Insert Depth Uniformity

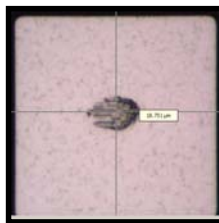


## Enhanced Scrub Marks

a) Before



Max. Size  
X : 29.0 $\mu\text{m}$   
Y : 3.6 $\mu\text{m}$



Min. Size  
X : 18.8 $\mu\text{m}$   
Y : 12.7 $\mu\text{m}$

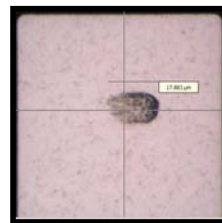
GAP

X : 10.2 $\mu\text{m}$   
Y : 0.9 $\mu\text{m}$

b) After



Max. Size  
X : 22.2 $\mu\text{m}$   
Y : 12.0 $\mu\text{m}$



Min. Size  
X : 17.9 $\mu\text{m}$   
Y : 11.3 $\mu\text{m}$

GAP

X : 4.3 $\mu\text{m}$   
Y : 0.7 $\mu\text{m}$

For More Information...

Justin Yun

justice@tse21.com

+82-41-580-9740



Technology & Science Enabler